

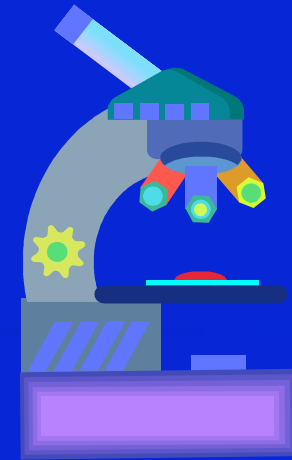


Guidelines for Community Oral Health Programs

Assessment



Assessment



- ✓ **Take a close look at your community's oral health status**
- ✓ **Identify the primary need(s) and/or problem(s)**
- ✓ **Prioritize the needs**
- ✓ **Then logically work towards solutions**

Why?



- ✓ **To gather the facts/data - about the problem, target group(s) and the resources and barriers.**
- ✓ **To examine and select program options**
- ✓ **To select a course of action and the steps needed to get there.**
- ✓ **To determine achievable and appropriate goals and objectives**

Some topics addressed:

✓ Sources of oral disease data

✓ Utilization of dental services

✓ Funding sources

✓ Dental manpower issues



✓ Types of community programs

✓ Oral health services resources

✓ Gap Analysis

✓ ...and much more

Linkages



- ✓ **ASTDD Seven-Step Model (*Assessing Oral Health Needs*)**
- ✓ **HP 2010: *Identifying and Engaging Community Partners*: also *HP 2010 Oral Health Toolkit***
- ✓ ***Forming a Community Coalition* – Training module**

